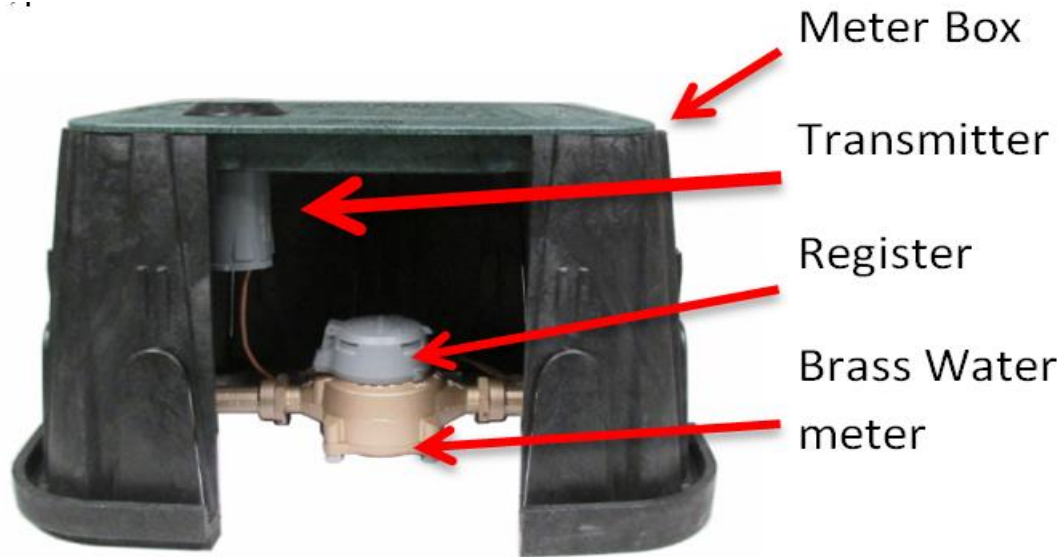
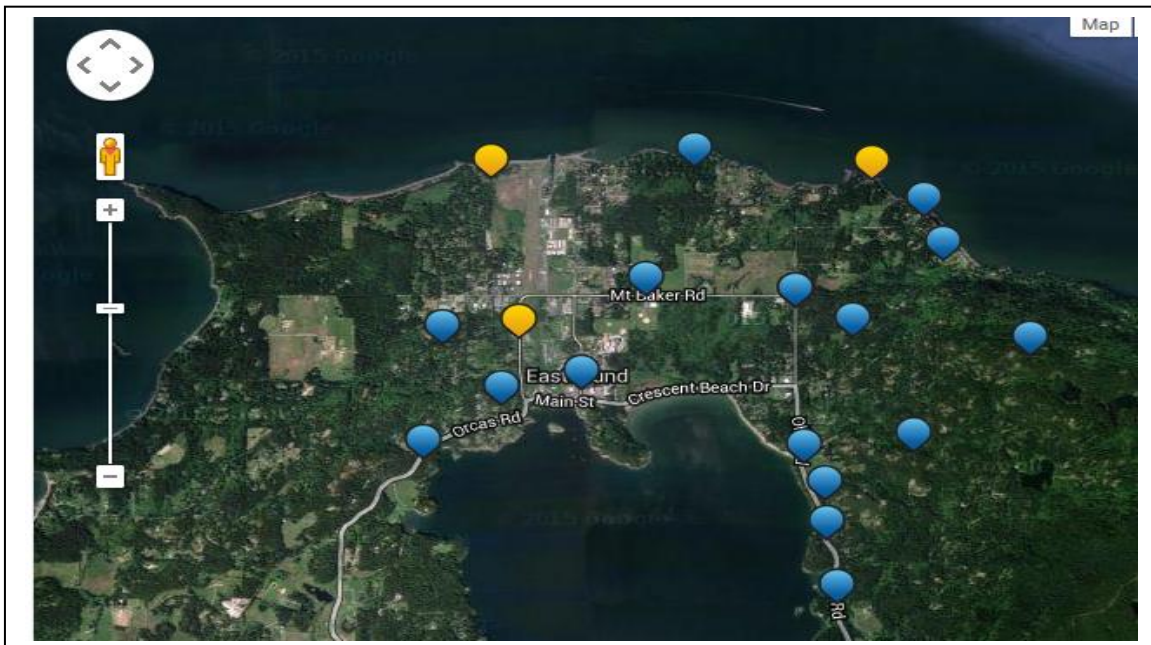


The Hardware

Every service has a meter box. EWUA will be installing a new “register”, and a “transmitter” on every service. EWUA will also be replacing the actual water meters if they existing unit is near the end of its life cycle.



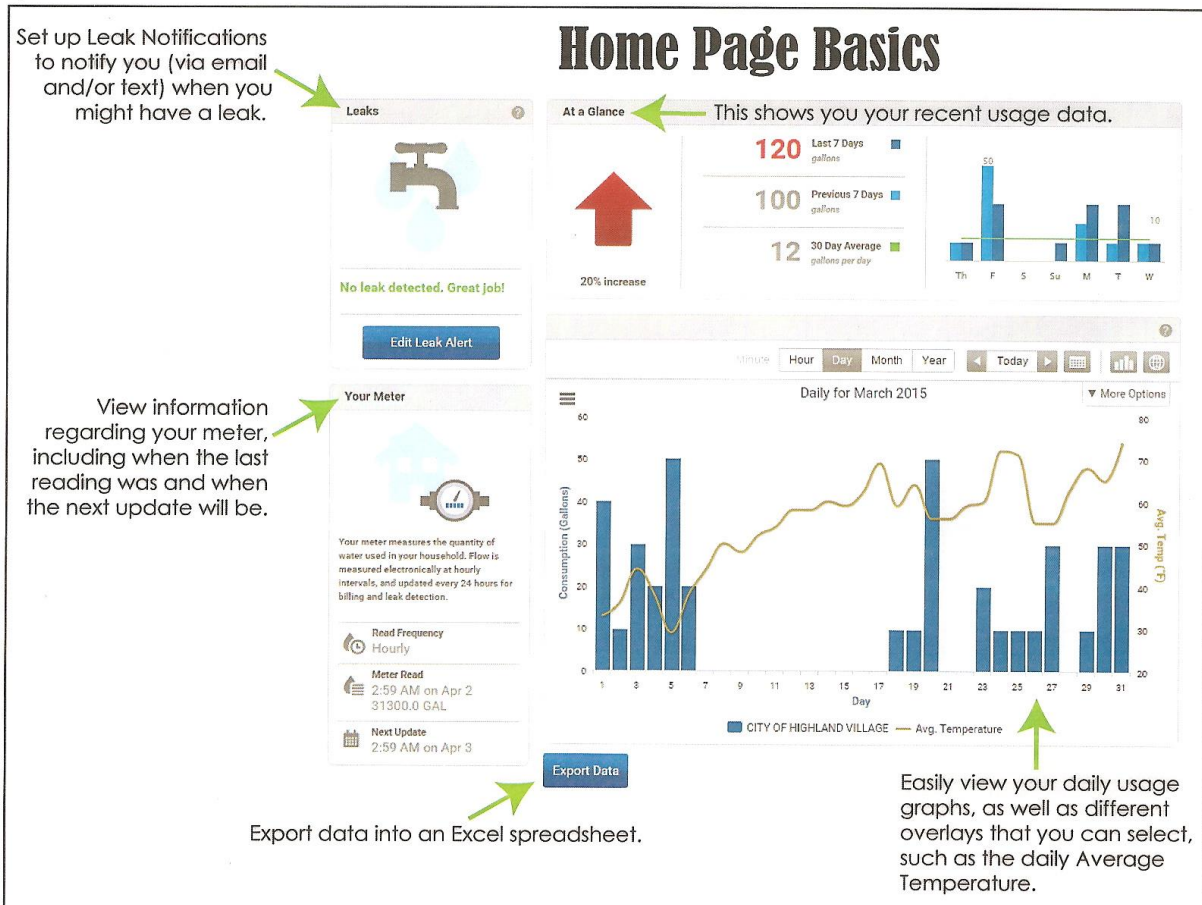
EWUA conducted a 4 month pilot study with several dozen units installed throughout our service area. Even in areas of marginal cell coverage, the “transmitters” have been able to successfully “report in”. Successful conductivity was a key goal of the pilot study. Every meter transmitter has been able to “report in” every day, even under Buck Mountain snow.



Information Access

Eye on Water is the name of both the website and app that members can use to access their water use information. Below are some screen shots of what type of information will be available to you after your water meter has been upgraded.

EyeOnWater - The New Water Monitoring Site



By creating a login account at EYE ON WATER you'll be able to access your current and historic water use, program leak alarms, and more. You can view your water use on daily, weekly, monthly or annual graphs. You can "toggle on" temperature and precipitation data to your water use graph. The data is even exportable. Your personal login protects your data from others.

EWUA will email login instructions as the meters are installing and activated.

EWUA/Member Responsibility

The water meter is the point of demarcation where the Eastsound Water's responsibility ends and the member/property owner's responsibility begins. This is common to virtually all metered water systems. Our new water meters will help EWUA operators monitor the water system as a whole as well as enhance member's ability to monitor the water lines in their house and on their property. EWUA's new water meters do not change the point of demarcation. Members are responsible for monitoring their property for leaks. This new technology does not expand EWUA's role in private property leak detection and notification.